



# BÖNING

## SHIP AUTOMATION

### IMX 2019 - Saint Louis, Missouri

## Were Hard Work Meets Innovation

IMX is the annual trade show for the inland and intracoastal marine transportation industry. At the show, you will find equipment and services that are critical in the transportation of goods along U.S. And it isn't just a tradeshow, it's a homecoming for the hard-working and dedicated inland community.

For its 6th year, the Inland Marine Expo (IMX) and *The Waterways Journal* will present the IMX Achievement Award to recognize individuals who have spent their career making significant contributions to the maritime industry.

Come visit Böning USA at IMX2019 - Booth 349

[May 20th to 22nd](#)

[Standard Calibrations, Inc. \(SCI\)](#)

[908 Ventures Way](#)

[Chesapeake, VA 23320](#)

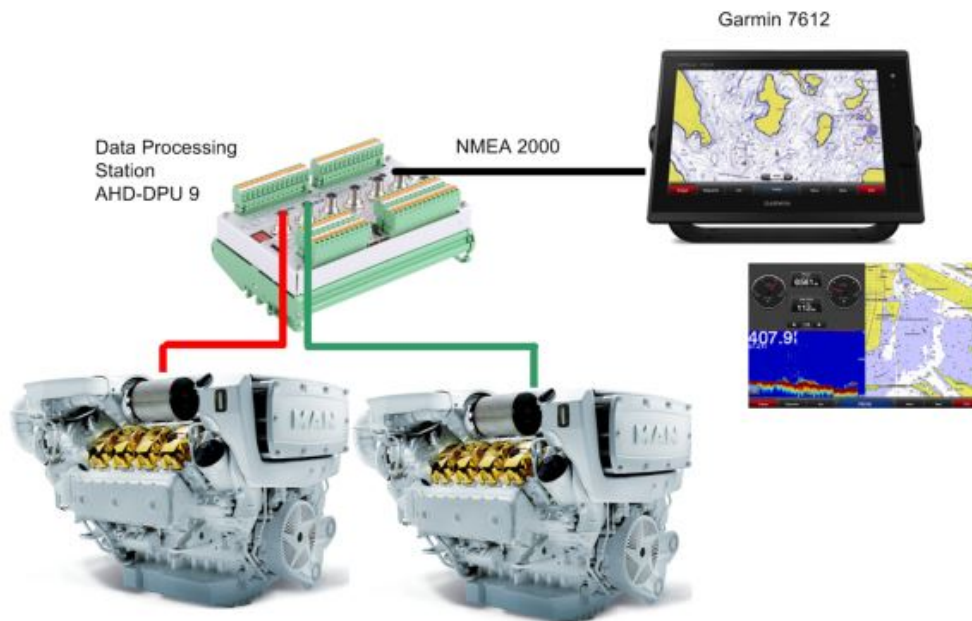
[United States](#)



Photos courtesy of the Seaman's Church Institute

[Read More](#)

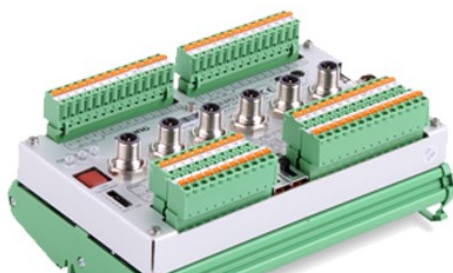
# "How do I see my MAN Engine data on my new Garmin screen?"



## Integration of MAN Engine data on Marine Multi function Displays

The AHD-DPU 9 is the only device in the market capable of converting the original MAN Engine protocol to NMEA 2000, to show engine data in Chart plotter displays, such as Garmin, Simrad or Raymarine MFD's.

The AHD-DPU 9 is a powerful processor, data can translate data from chargers, generators, HVAC, power management, etc.



### Technical Data

Power Supply	24 V DC (+30% -25%)
Current Consumption	Ca. 170 mA (24VDC)
Environmental Temp.	-30°C... + 70°C
Storage Temperature	-50°C... +85°C
Weight	appr. 0.7 kg
Protection Class	IP 20
Overall Dimensions (mm)	188 x 126 x 63
Interfaces	28 x binary input/output channels (optocoupler, serial, static)
	6x CAN (galvanically isolated, termination and address)
	1x LAN (RJ45, 10/100 MBit)
	1x serial (RS232/RS485)
	2x serial (RS232/RS485/RS422, switch-



AHD-DPU 9

CERTIFIED

DNV-GL



Lloyd's Register



Inputs	4x optocoupler (alarm acknowledgement, optional special functions)
Outputs	5 x relay output (galvanically isolated, 2x contact 2-pin, 3x contact 1-pin)
Approvals	GL (IAMC System) RS
Required distance to compass	Standard magnetic compass: 55 cm Steering magnetic compass: 40 cm

[Learn more](#)

## Partnerships

# Böning and The Yacht Group

Integration of Yacht Beam Searchlights on Böning Displays



The Yacht Group, well known for providing *“innovative technology for the marine industry”*, announced today the integration of the YachtBeam information and control panel on **Böning** displays. This integration allows YachtBeam and **Böning** users to take advantage of the **Böning** display for accessing the YachtBeam controls, thereby having a vivid color visual and easy method to control and see the system without the need for another dedicated joystick on their boat.

*“Customers will take advantage of combining both companies’ advanced technologies within the Böning screen to improve their boating pleasure, safety,*

and experience” - Gerald Berton, President of the Yacht Group.

For further information contact:

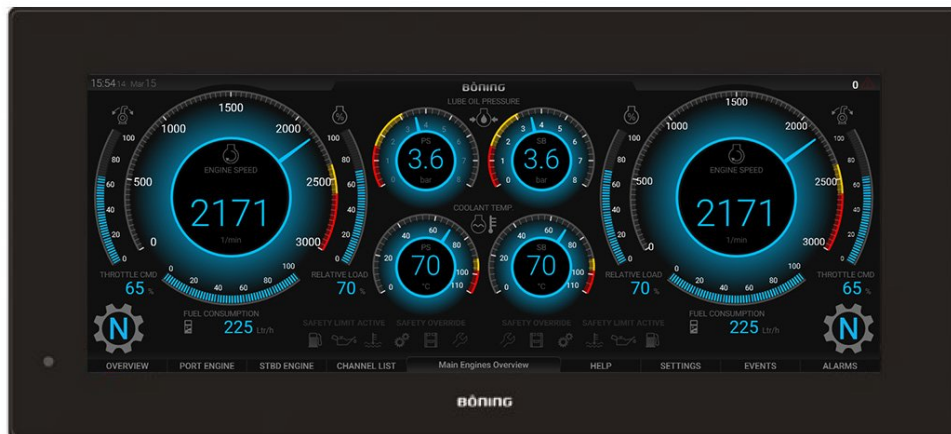
The Yacht Group : Anthony Valiente - [Sales@theYachtGroup.com](mailto:Sales@theYachtGroup.com)

Böning: Luiz Barbarini - [luiz.barbarini@boening.com](mailto:luiz.barbarini@boening.com)



# Böning AHD 1313 GW

Universal Marine Engine Monitoring Display

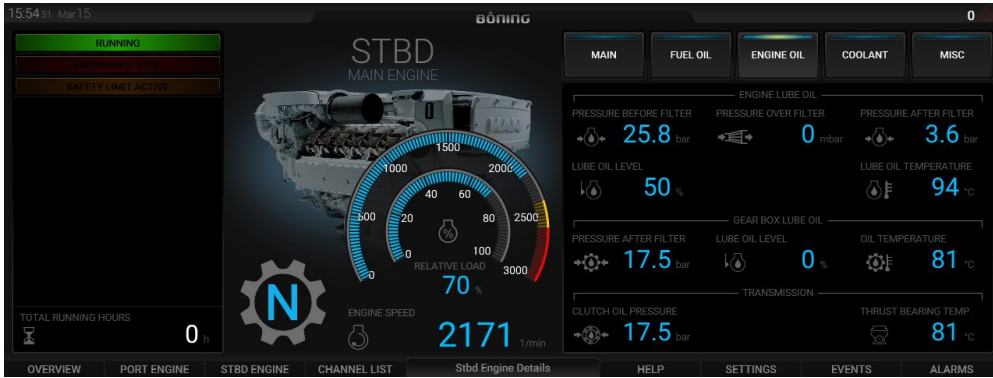


The AHD 1312 GW is the latest development from Böning for Engine monitoring. It is compatible with many marine standards (J1939, NMEA 2000), which are used by the most popular engine brands (MAN, CAT, MTU, Volvo, etc.)

Contact us and request more information!

Contact us!





Copyright © 2019\*, Boeing USA All rights reserved.  
 +1 (561) 372-9894 • [info@boeing-usa.com](mailto:info@boeing-usa.com)  
 Boeing USA, Inc. · 4281 NW 1st Ave · Boca Raton, FL 33431-4236 · USA

This email was sent to <<Email Address>>  
[why did I get this?](#) [unsubscribe from this list](#) [update subscription preferences](#)  
 Boeing USA, Inc. · 4281 NW 1st Ave · Boca Raton, FL 33431-4236 · USA

