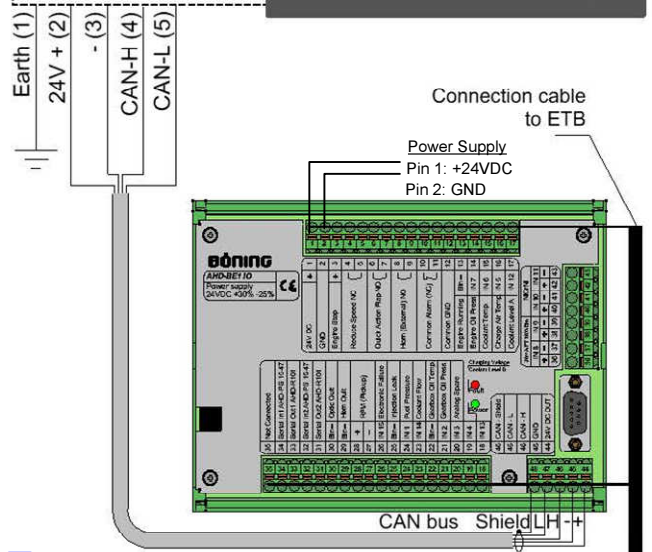
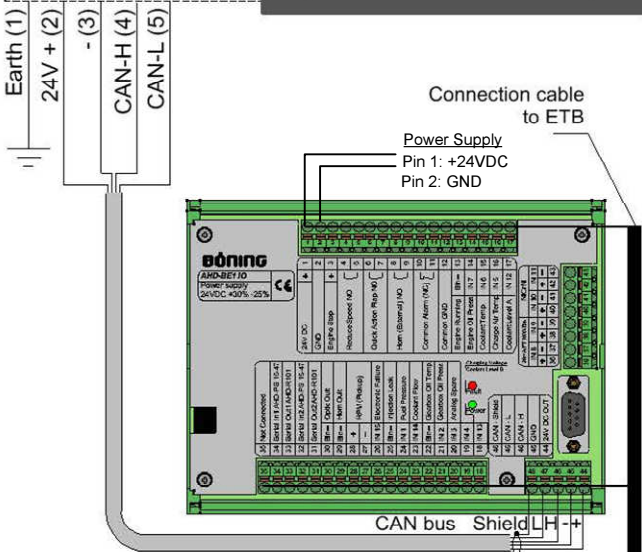
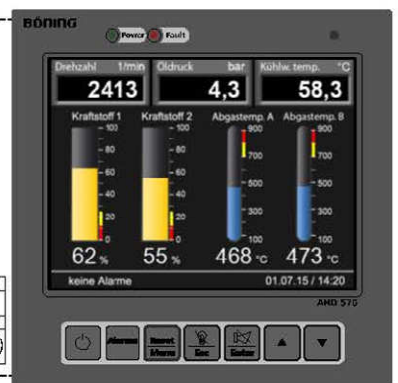
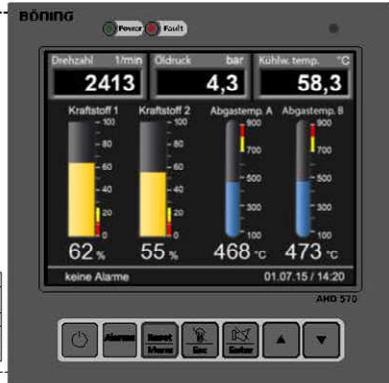
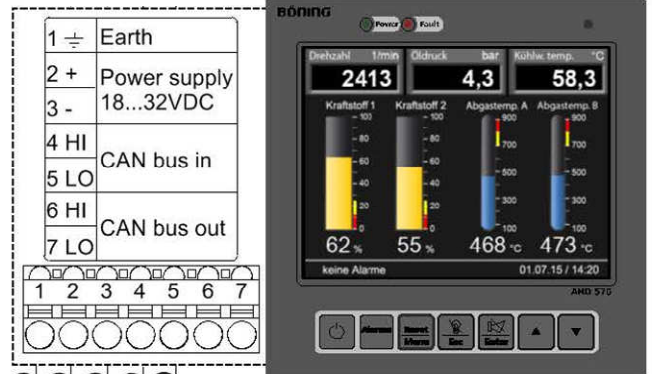
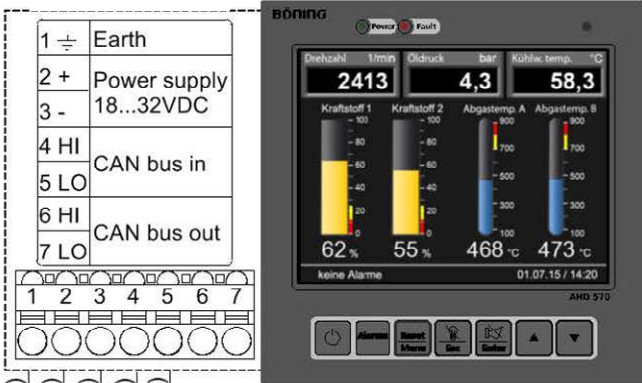


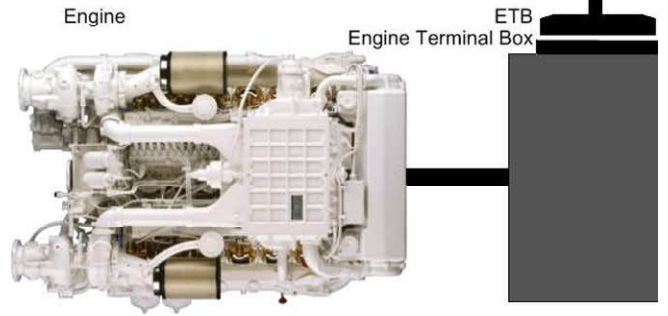
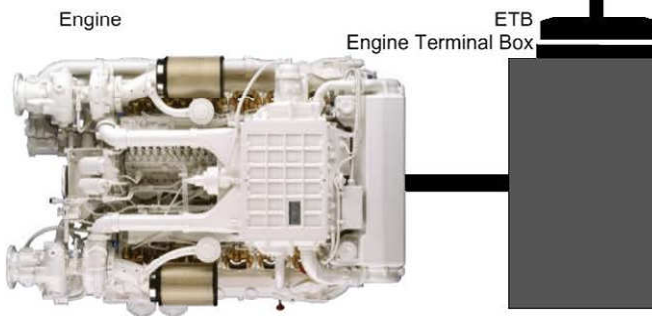
PS. AHD-570 – ID:02

STBD. AHD-570 – ID:02



PS. AHD-BE1 IO – ID:01

STBD. AHD-BE1 IO – ID:01



Port Side Engine

Stbd Side Engine

CAN-Bus 1 engine port	CAN-Bus 5 device control	VGA signal	Multiple core wiring *)
CAN-Bus 2 engine stbd	CAN-Bus 6	DVI signal	Ribbon cable
CAN-Bus 3 ship alarm system	CAN-Bus external system *)	Video cable with BNC connector	Single wire *)
CAN-Bus 4 ship alarm system (redundant)	Engine Start/Stop	CAT5 cable with RJ45 connector	
T CAN T-Piece		Beschreibung/Description	Geändert/Modified *** Datum/Date 07/12/19
R CAN Termination resistor		AHD-BE1 IO Wiring Diagram	Geprüft/Checked Datum/Date
*) Customer supply		Dateiname/Filename	Verknüpfung/Link Seite/Page 1/1
**) Optional equipment			
Power supply 24VDC +30% / -25%			
Comment: The instruments in the system overview are provided with links. For more information, you can view our corresponding website directly by clicking them.			

Boeing USA, Inc.
3100 NW Boca Raton Blvd.,
Suite 409, Boca Raton,
FL 33431

BÖNING
SHIP AUTOMATION

Office: +1 (561) 372-9894
www.boeing-usa.com